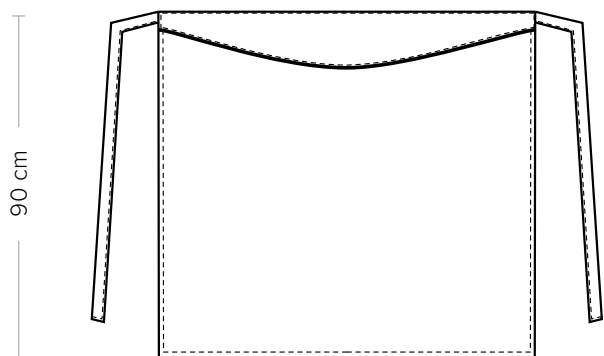


# GIUNONE

CODICE ARTICOLO

COD. Q8H00197

**Giblor's**  
italian work/life specialist



## DETTAGLI

- Baschina per nascondere il laccio

## TAGLIE

Taglia unica

## COLORE

U32 Nero

Z48 Blu

U35 Bordeaux

## TESSUTO

65% poliestere

35% cotone

200 g / m<sup>2</sup>



Le misure indicate si riferiscono alle taglie **S** per i capi femminili, **L** per i capi maschili. Per i capi a taglia unica le misure indicate sono effettive.

Il grembiule Giunone presenta ampie dimensioni, il caratteristico piping a contrasto, e una baschina dalla forma sinuosa. Le varianti proposte sono bianca con piping grigio perla, nera blu e bordeaux con piping grigio perla, bianca con piping tricolore.

## COLORI DISPONIBILI



U32 Nero



Z48 Blu



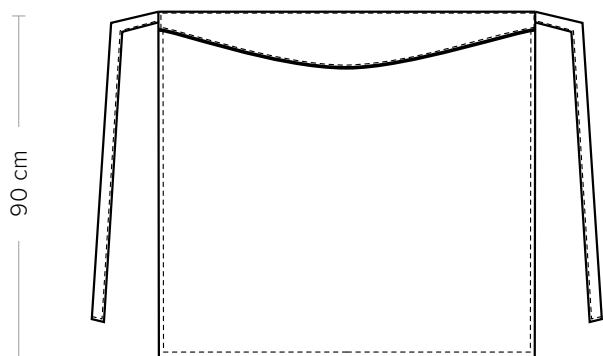
U35 Bordeaux

# GIUNONE

ITEM CODE

COD. Q8H00197

**Giblor's**  
italian work/life specialist



## DETAILS

- Basque to hide the string

## SIZES

One size

## COLOURS

U32 Black

Z48 Blue

U35 Burgundy

## FABRIC

65% polyester

35% cotton

200 g / m<sup>2</sup>



The measures indicated refer to sizes **S** for women, **L** for men. For one-size-fits-all garments, the measurements indicated are effective.

The Giunone apron has large dimensions, the characteristic contrasting piping, and a basque with a sinuous shape. The proposed variants are white with pearl gray piping, black blue and burgundy with pearl gray piping, white with tricolor piping

## AVAILABLE COLOURS



U32 Black



Z48 Blue



U35 Burgundy